



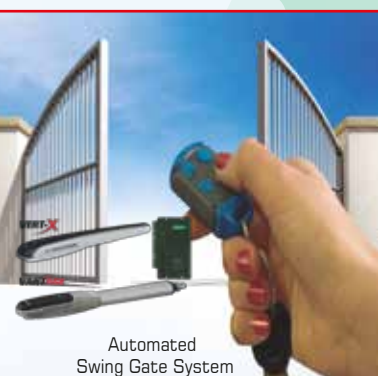
"Affordable Reliable Security Solution"

SECURITY SYSTEMS INTERNATIONAL LTD. (KENYA)

HOME OF QUALITY ELECTRONIC SECURITY PRODUCTS

Distributors & Suppliers of all Security Equipments:

- CCTV Cameras • Alarm Systems • Biometrics & Time Attendance • Electric Fence,
- Walk Through Metal Detectors • Road Barriers • Turnstiles • Remote Gate Automations & X-ray Baggage Scanners



Automated
Swing Gate System



Smart School Biometric System



Cafeteria Biometric System



Sliding gate



CCTV System



Garage Door System



Guard Patrol System

Hotel Lock System



Fire System



Automation Commercial System



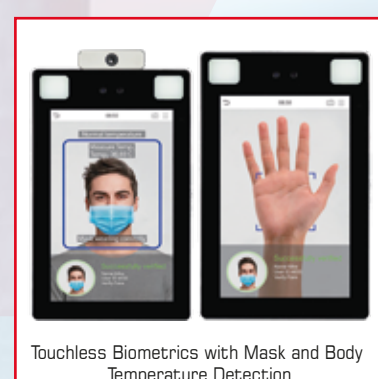
ZKTECO Baggage

Metal Detector

Under Search
Mirror



ZKTECO Walk through
& Speed Gate and Tripods



Touchless Biometrics with Mask and Body
Temperature Detection

PRODUCT CATALOGUE



Email: info@securitysystemsintltd.com
www.securitysystemsintltd.com

Table of contents

| | |
|--|----|
| About the Security Systems International LTD. [Kenya]..... | 2 |
| Gate Automation..... | 3 |
| Time Attendance & Access Control..... | 4 |
| Touchless Biometrics & Accessories..... | 6 |
| Accessories..... | 7 |
| Cctv Cameras & Accessories..... | 8 |
| Guard Tour Patrol System..... | 11 |
| Automatic Alarm System & Accessories..... | 13 |
| Automatic Alarm System..... | 14 |
| Fire Systems..... | 15 |
| Automation Process..... | 16 |
| Electric Fence & Accessories..... | 19 |
| Audio And Video Door Phone..... | 20 |
| Anti-theft Foggy Systems..... | 22 |
| Pos Systems..... | 22 |
| Hotel Lock Management System..... | 23 |

About SECURITY SYSTEMS INTERNATIONAL LTD. (Kenya)

Security Systems International Ltd was started in the year 2009 as a business entity to deal in sales and services of security systems and alarms equipment by one of the directors after several years of working with leading security companies. To within a span of few years, it has managed to offer excellence services to several corporate companies and individuals in the security industry. As a company based on technical advisory, consultancy and installation, we wish to express our interest in providing you with our professional security services at your premises. We offer domestic, commercial and industrial security solution by utilizing the modern security equipment devices and products from leading manufacturers in **U.K, Israel, Japan, U.S.A, Taiwan, South Africa, Lithuania, China** and **Canada** in distribution and supply of the following:

- **Automatic and Manual Alarm systems.**
- **Electric Fencing and Razor Wire Fencing.**
- **Closed Circuit Television (C.C.TV) both analogue and digital [IP cameras]**
- **Access Control and Time Attendance systems.**
- **Intercoms [Audio and Video entry systems]**
- **Electric and Automatic gates.**
- **Walkthrough and Hand Held Metal Detectors**
- **Hotel Lock, Smart Lock and POS Systems**
- **Security products consultancy.**
- **Gate automation, boom barriers bollards, Turnstiles & Road spikes.**

MISSION

Our main objective is to provide maximum and suitable security to satisfy our clients and meet their requirement. We also advise our clients on the advances in the technology of security equipment and their reliability, by offering affordable, reliable services, and ensures that our services meet all the international security standards

VISION

Our vision is to expand and become a leading security distributor in the East Africa region and provide customer relation and advisory support.

Why Security Systems?

COMPETENCE

We have competent technical teams and consultants who have gathered enough experience in the same field having worked in most of the leading security firms in the region in the last ten years.

TERMS OF SERVICES

We give warranty services of all the system equipments supplied and also offer maintenance at an affordable fee. We would therefore be pleased to be associated with your company in offering any of the above security systems which may be required to your satisfactions.

TECHNICAL ADVICE

Today's world is increasingly becoming infested with crime. The damage caused due to this is usually irreparable. The modern corporate environment has become increasingly competitive and is witnessing rising cases of industrial espionage. Information has become the competitive edge and there is a growing need to provide it to our customers. We at SSIL provide a comprehensive crime prevention and security systems using intelligent sensors linked to a microprocessor based equipment which activate alarm on receiving signal from the devices attached.

Security products currently available in our firm are very user friendly and extremely easy to install and are readily affordable. Bearing in mind the current crime rate in the world, they are becoming a necessity and should no longer be considered a luxury item. We ensure that potential customers realize that many alarm systems exist but the prime concern for each customer is the suitability of each product for their particular needs, reliability, functioning and cost effective.

GATE AUTOMATION

This technology allows the authorised users to open and close the gates or garage doors at their premises with the help of a remote button at a safe distance or via a mobile phone from anywhere in the world. This saves you the tedious task of having to come out of your vehicle open the gate manual, drive through it, park for a while and then come to close the gate again. The gate automation motors are either Swing gate motors, Sliding gate motors and garage door system.

SLIDING GATE MOTORS SMART SERIES



D2 Turbo is a high-speed, cost-effective operator for domestic gates weighing up to 250kg.



D5 Smart: You can vary the acceleration and deceleration of your gate and make it move so smoothly, it will do so for many years to come. Handles up to 500kgs



D10 Smart: Has robust gearbox to provide an access automation system that is quick, powerful and battery backed up – perfect for industrial and commercial applications where heavy gates are installed. Handles up to 1 tonne.



D20 SMART: A brand new D20 SMART industrial sliding gate motor. Strong enough to move a 2t gate. Maximum Gate length 25m. Motor voltage 24V DC

VANTAGE SWING GATE SYSTEM

It is an exceptionally strong set of operators for gates up to 4m wide, per leaf STRONGER. SUPERIOR. SECURE.

MODELS:

- VANTAGE 400** – Reliable operator with a shorter stroke for the majority of domestic swing gate applications.
- VANTAGE 500** – Extended stroke for larger domestic and light-industrial swing gate applications.



Automated Swing Gate System



Sliding Gate



Swing Gate

GARAGE DOOR CONTROLLER

The SD04 has built-in anti-crushing circuitry will cause the door to stop and reverse if an obstruction is detected, helping to prevent serious damage or injury.



Garage door controller

TIME ATTENDANCE & ACCESS CONTROL

This is a security technique that regulates time, who or what can view or use resources in a computing environment. It is a fundamental concept in security that minimizes risk to the business or organization Time & Attendance Systems using Fingerprint clocking devices Using biometrics for recording your employees time and attendance is by far the most accurate and cost effective solution available. Fingerprint devices are currently the most popular biometric devices for time and attendance. F series, X series, S series, K series, G series, W series e.t.c

Readers-Access Or Time Attendance



Card and Code readers



Stand alone Biometric Devices



Palm detection devices



face detection devices



Vandal Proof Readers



Portable time attendance devices

Door Controllers



IP-based Biometric Door Access Control Panel.

Access Inbio Door Controllers



Slave Readers

slave readers are fingerprint or prox card readers with RS485 communication interface works with biometric access controllers and fingerprint standalone access control, including door controllers and so on.



Finger and cards enrollers

It offers the function of capturing and transferring fingerprint /card samples to the access control panel.



Automatic Door closer

It has hydraulic Mechanism that open/ closes a door automatically using a remote or an access reader It is installed between the door frame, and the door. Supports weight Upto 200Kg.

TOUCHLESS BIOMETRICS TECHNOLOGY

ZKTeco has made a huge effort to incorporate new features to its latest security and facial recognition devices to allow not only palm and facial recognition, but also facial recognition with mask detection and body temperature measurement.

- ProFace X [TD] | Face, Palm-vein, Mask and Body Temperature Detection
- SpeedFace-V5L [TD] | Face, Palm-vein, Mask and Body Temperature Detection
- The QR code Reader is a new generation of intelligent access control card reader. It has fast scanning speed, high recognition rate, High compatibility, and can be connected to any access controller that supports Wiegand input



Speed Face V5L [TD]



Proface X [P]



Proface X [XD]



QR code Reader



Flap Barrier with TD

ZN-T1
Body Temperature Detection Network Camera

Temperature Detection

ZN-TH01
Portable Blackbody

Temperature Detection

ZK-D3180S
Walk-Through Metal Detector with Body Temperature Measurement

Temperature Detection

SpeedFace V5L [TD]
Facial Recognition Terminal with Body Temperature Detection

Wide Pose Angle Acceptance
Temperature Detection
Masked Face
Protective Palm Recognition

Proface x [TD]
Facial Recognition Terminal with Body Temperature Detection

Wide Pose Angle Acceptance
Temperature Detection
Masked Face
Protective Palm Recognition

SBTL8033
Touchless Entrance Control Solution with Body Temperature Detection

Wide Pose Angle Acceptance
Temperature Detection
Masked Face
Protective Palm Recognition

Visible Light Technology

To enhance efficiency and preciseness, ZKTeco offers complete access control systems combining Visible Light Facial Recognition. The Enhanced Visible Light Facial Recognition is rather an all-round upgraded version on previous facial recognition technology, not only qualified for general applications, but also competent for advanced recognition task under a dynamic environment. Especially for its cutting edge anti-spoofing function, any business with high-level security requirements will find it a more reliable technology solution over the rest.

Therefore, this is precisely what the Enhanced Visible Light Facial Recognition was developed for and the key to this breakthrough would be incorporating Deep Learning technology. Deep Learning is adapted to fill up those three technological incapacibilities as aforesaid and has been passing through continuous training to keep enhancing its performance.



Speed Face - H5



Speed Face - V5 & G4



Zkteco Horus



Zkteco Horus E1

Green Label Technology

Green Label is a project-oriented high-end product line, loaded with stunning and innovative features. This advanced product line is made with a beautiful and modern hardware and firmware design and is the perfect match for the ZKTeco latest All-in-One software platform ZKBioSecurity to provide a full featured biometric time management and security solution.

ZKTeco's new exclusive product line, Green Label, aims to provide the ultimate product innovations with a unified branding design, secure and stable PUSH HTTPS communication protocol and the most complete verification methods variety. From USB readers and AC Standalone terminals, to our most advanced Access Control Panel, InBio-Pro, Green Label Series meet all needs you may require for any project.



Pro RF



G3



Pro Capture Series

Thermal Scanning Technology

ZKTeco combines thermal imaging and Visible Light recognition technology in both access control terminals and entrance control systems to help various industries detect personnel or suspicious visitors with ultra-fast and accurate temperature screenings during identity recognition at the entrance of each monitoring area.

As employees, users, visitors, and patients walk close to the thermal imaging detection area [approx. 1.2m away from the thermal imaging sensor], the system will acquire biometric data for identification and generate images for the record. After successful verification, the system will measure the body temperature of the user afterward.

If the temperature detected is over the pre-set value, an alarm will be triggered, and notice will be delivered to the guards. ZKTeco believes that this kind of product will help reduce the risk of germs spreading while maintaining an excellent performance of biometric security.



Thermal Scanner
Body Temperature Detection



CCTV Cameras with Body
Temperature Detection





IP Controller Series



Fingerprint & Card Reader Biometric



Matrix COSEC enterprise covers Time-Attendance, Access Control, and more industry based security solutions. All-integrated solutions including hardware devices, software platform, and a suite of software application modules. Matrix biometric Time-Attendance and Access Control devices are superlative in designs, versatile in functions and robust in performance and have been appreciated worldwide through multiple accolades.

Door Controller, Dongle, Fingerprint & Card Biometric Reader

Magnetic Lock and Bracket ZL,U and L



Strike & Bolt lock



Maglock



L,U and ZL bracket

An electromagnetic lock, magnetic lock, or maglock is a locking device that consists of an electromagnet and an armature plate. They are a popular and common locking solution for doors. In Offices, Schools, Universities, Homes to limit access by unauthorised users

Door Closure



This is a device that closes a door in a controlled manner, preventing it from slamming, in general after someone opens it, or after it was automatically opened (when opened automatically they are commonly referred as a door opener).

Break Glass



Used to activate fire alarms in case of fire, or open access control doors in case of emergency exit.

Key Switch



This is a switch that can be activated only by the use of a key. They are usually used in situations where access needs to be restricted to the switch's function and override power in case of faults in the access control systems or emergency exit in case of a disaster.

Request To Exit Switch



These buttons are usually used with access control doors by pressing which an electronic or magnetic door system opens. This is achieved by breaking the power to an otherwise powered device

CAMERAS-AHD AND I.P

The main difference between an analog and IP camera is the way in which the video signal is delivered. Both analog and IP-based video cameras can transmit signals either wirelessly or through wired connections such as Cat-6 cables. Analog cameras turn the video signal into a format that can be received by a television or other receiver such as a DVR or monitor. An IP-based camera, also known as an IP network camera, digitizes the video signal using a specialized encoder that contains an onboard web server. This allows the IP camera to act as a network device, thus allowing captured video images to be viewed not only through an existing network but also through a web browser that can be accessed through the Internet. Both system can be viewed via mobile phones

DVR's AND NVR's

DVR stands for Digital Video Recorder, whereas NVR stands for Network Video Recorder.

NVR and DVRs are responsible for video recording.. The difference between NVR and DVR is how they process video data.

DVR systems process the video data and encodes for AHD systems at the recorder, whereas NVR systems encodes for IP system and process the video data at the camera and then stream it to the NVR recorder which is used for storage and remote viewing.

AHD CAMERAS and IP CAMERAS



Bullet CCTV camera



Hikvision indoor dome camera



Speed Dome Camera



3G Camera System



Uniview IP System



Dahua HD and IP System

SPY CAMERAS



4G Solar Camera with SIM Slot



Nanny Camera



Miniature Hidden camera



Bulb Spy Camera



Number Plate Capture Camera



ZKTeco Cameras Colorvu



ZKTeco dome camera



ZKTeco Speed dome Cameras



Coaxial and Cat6 Cable



CCTV Tester Monitor



Power Supply



CCTV Connectors



MOBILE DVR CAMERA SYSTEM

WHAT IS COLORVU TECHNOLOGY?

When using a conventional camera with infrared lighting for night monitoring, people, vehicles, or other important objects are blurry and blend into the background, making it difficult to identify details. Color-related information is crucial for many scenarios and are a great asset for data and analyses. However, conventional cameras often lose important details when rendering only black and white images. ColorVu Technology is our solution to this common challenge faced by many security system users.

ColorVu Cameras' powerful ability to capture details in low lighting comes from two specific breakthroughs in hardware technologies: advanced lenses and high-performance sensors. Coupled with a supplemental light for extremely dark scenarios, ColorVu cameras guarantee video with colorful details when you need them.

The Key Benefits of Full-color Video

True Color Information

- Accurate color rendering
- Excellent performance in low-light environments

More Details

- Clearly captured color information and richer details compared to black and white imaging

Better Visual Experience

- Balanced brightness
- F1.0 super aperture and advanced sensor guarantee realistic rendering

HIKVISION

F1.0 Super Aperture

- f/1.0 Super aperture collects more light to produce brighter images
- 4x amount of light of conventional cameras

Advanced Sensor

- Vastly improves the utilization of available light
- Self-adaptive 3D Digital Noise Reduction to remove noise and ensure full motion video

Friendly Lighting

Supplemental light is only needed for extremely dark environments.

Dahua Full-Color
Colorful View Ever, Dark World Never

ZKTECO

“Affordable Reliable Security Solution”

Normal camera at night



Colorvu camera at night



A guard tour system is a system used to help companies and organizations to organize, log and execute guard tours and patrols in their assets ensuring that the officers will accomplish their tasks within the predefined time intervals

Why we recommend guard tour systems

1. Reporting-it can generate a variety of reports which would eliminate the need for manually handwritten daily shift reports.
2. Real-Time Tracking-Security guard management software provides can monitor and track their employees and security teams in real-time.
3. User-Friendly-security patrol software aiming to help users minimize cost and waste of time should be user friendly software,.
4. Cloud Based System- which can virtually transfer your office anywhere in the world, and will not interfere with your work due to regional restrictions. The software can installed and can be accessed anywhere through a webserver.
5. Organizational and Efficiency- Managers can have full detail of security guards' working time, attendance time, and tours. It allows managers to use patrol data to track the performance of security guards, levels for performance reviews, incentive programs, and efficiency audits..



Touch iButton

Waterproof, dustproof and shatter resistant. Function of alarm clock, 200 groups alarm clock helps security guards work on. It has a pedometer. Impact Records



WM-5000V4 & V5

WM-5000V4/5 works with RFID tags; with a simple non-contact swipe, the reader can read information from the tags.



WM-5000x1

Fingerprint Guard Tour System

Fingerprint authentication, Voice Prompt/Task Prompt more humane, more professional, more efficient.



WM-5000L5

GPS Tracking Watchman Clocking System

Track patrol tracks of patrol employees in real time and support playback.



WM-5000P4D

GPS 4G Real-time Guard Tour System with Voice Call

- GPS+Beidou
- Voice Task Prompt
- Voice Call



WM-5000ZG

GPS 4G Real-time Guard Tour System with Fingerprint

- Fingerprint Identification
- GPS+Beidou
- Voice Task Prompt
- Voice Call



S922 with GPRS

The S922 is specifically designed for off-site time management. It is built with a robust technology and top handle with rubber coating enables users to carry it easily. It can work effectively as a guard tour device and construction site because it will use the GPRS to send data to the control room

Tel: +254 20 6550 533 | 20 805 7550 | Cell: +254 727 700 939 | 780 233 251 | 788 141 528 |
Email: info@securitysystemsintltd.com | www.securitysystemsintltd.com



An automatic alarm is a system designed to detect intrusion, such as unauthorized entry, into a building or other areas such as a home or school

CONTROL PANEL

Performs all necessary functions and is suited for the protection of apartments and offices. This control panel is supplemented with a function of calling user's phone, Sending sms in case of alarm activations also enabling users to do remote arming and disarming the system through the phone



IDS Alarm System



Secolink with GSM Communicator



The Wireless GSM based alarm system lets you monitor your home from anywhere using your phone or tablet, including indoor and outdoor sensors.



MAGNETIC CONTACT SENSOR

They are used to monitor a door or a window and let an alarm system know when it has been opened.



MOTION SENSORS and BEAM DETECTORS

PIR detector (Passive Infrared) is a type of motion sensor used to detect the body movement of humans, Indoor and Outdoor to alert during an intrusion

VIBRATION SENSOR and PANIC BUTTONS

They are used to monitor windows, ie sense impact subjected on the windows and set a trigger signal to the control panel when it senses vibration, shaking and striking and moving ie detect a forced entry through glazed areas.



Vibration Sensors



Panic Buttons

POWER SUPPLY



POWER SUPPLY and BATTERY

The primary function of a power supply is to convert electric current from a source to the correct voltage, current, and frequency to power the load.



COMBINED SIREN MR 300 R

They receiver trigger signals of the alarm panel during an intrusion to enable it produce warning sound that there is an intrusion



REMOTE KIT

They act as receiver units for wireless communication with trigger units. They range from 100m to 500m. They can be used for panic activations ,arming / disarming in alarm system, gate & garage door access control, alarm systems, switching on / off lights and switching on / off generators, automatic gates and many more



Mimic Base



Mimic Base remote button



Mimic Base receiver kit

Mimic Base System

It is used to amplify remote signals within a complex alarm transmission system like shopping complex, gated community housing or areas difficult to do wired systems



NURSE CALL SYSTEM

For the complete Wireless Nurse call solution in hospitals and frail care facilities



Fire alarm system refers to a combination of a number of devices that are working together to detect and warn people through visible or audio appliances when there is smoke or fire, or other emergencies are present.

CONTROL PANEL

The control panel receives distress signals from devices designed to detect and report fires, monitors their operational integrity and provides for automatic control of equipment, and transmission of information necessary to prepare the facility for fire based on a predetermined sequence. The panel also supply electrical energy to operate any associated initiating device, notification appliance, control, transmitter, or relay.



SMOKE/ HEAT DETECTORS

These gadgets save lives, prevent injuries and minimize damage by alerting you to a fire as early as smoke is sensed.



FIRE EXTINGUISHERS & BLANKETS

A fire extinguisher is an active fire protection device used to extinguish or control different kind of fires, often in emergency situations. They are in different kind example foams, powder, carbon dioxide, water etc.

SIGNS

They are used to give a message or instructions, incase of fire emergencies



SOUNDER/BELL

Is a gadget used to alert persons at a fire risk. It is usually powered (wired in) by a central fire alarm system, which is powered by the main panel, with a battery backup.



ARMoured FIRE CABLES

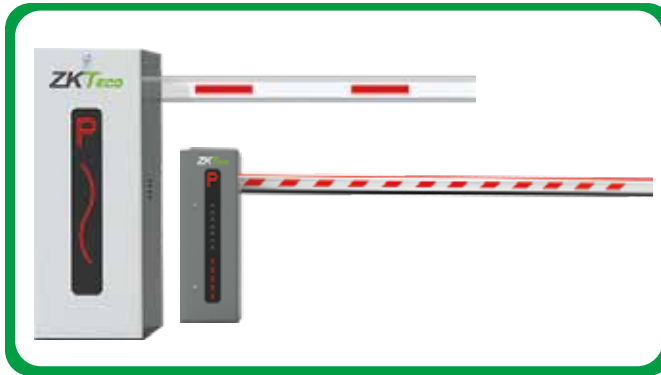
They are used in wiring purposes from the control panel and other gadgets.

BARRIERS

This is the perfect solution to traffic management problems in your private business premises or car park. The highly durable, highly effective barrier can be quickly and easily installed to provide instant traffic management for your area. It is available in a variety of sizes ranging from 3 meters to 6 meters



CENTURION barriers



ZKTECO barriers with LED

TURNSTILES, TRIPODS AND SPEED GATE with BIOMETRIC READER

A full-height turnstile is another type of pedestrian barriers. Largely these security doors are used for indoor or outdoor application within project of highest security/ vandal proof requirements



Tripods and Speed Gate

Double and single Turnstiles

WALK THROUGH METAL DETECTORS

These are available with different numbers of detection zones, i.e., 18 and 33 zones, the greater number of detection's zones the more accurate the location of metallic object on the person can be determined, saving operator time. Walk-through metal detectors typically use pulse induction (PI) technology. When a piece of metal passes through the magnetic field, a reflected magnetic field is created. This magnetic field then reacts with the receiver coil, which, in turn, triggers the alarm system. They are used to ensure people entry is safe and secure or to deter theft of metallic spare parts and objects, harmful object like guns, knives e.t.c used in public places, Schools, Office, Hospital and airports.



HAND HELD METAL DETECTORS

Hand held metal detectors are designed for quick and efficient body search scanning for concealed metal objects. Metal detector wands offer a practical, low cost alternative by enabling operators to scan a person's body to locate exactly where metal objects are concealed. They are extremely easy to operate simply requiring a single sweep across a subjects body or across a bag or container, to detect hidden metal objects.



UNDERSEARCH MIRROR WITH CAMERA

Search mirrors are designed for viewing inaccessible areas both inside and outside of vehicles which are normally difficult to see such as underneath of cars to check for attachments





BAGGAGE SCANNERS

It is a compact X-ray baggage scanner ideal for checkpoints, small baggage and large baggage scanning in high security premises such as Airports, Government offices, Railways, MRTS and other premises applications for ensuring all packages entering the aeroplane or being carried into buildings are safe i.e. not contrabands or drug trafficking. Models are:- 5030A, 5030C, LD5030 and 6550A

CLAWS AND SPIKES

Claws and roadway spikes are add high security gadgets to traffic barrier in order to access controlled entrances and exits, boasting robust construction to withstand impacts from vehicles. They are used either as stand alone or with boom barriers to enhance security.



ZK-E8800 PORTABLE THREATS TRACE DETECTOR

These Portable Threats Trace Detector is based on Ion Mobility Spectrometry (IMS) technology, which enables it to quickly and accurately trace explosives and narcotics at the same time then identify amount and types of suspicious substances. In addition, the detector has the function of X- & gamma radiation dose rate detection which makes it a 3-in-1 threats detector.

BOLLARDS

Bollards are also used to delineate the spaces between pedestrian walkways and parking lots, such as outside stores. This helps to protect people walking into the store from errant vehicles. Bollards can also help prevent vehicles from crashing into buildings to deter terrorist attacks.



G-Speak

Beam Sensors

COMMUNICATION GADGET G-SPEAK and BEAM SENSORS

The G-SPEAK ULTRA is a wireless, mobile-based intercom system consisting of a combined gate station and GSM module. The G-Speak ULTRA is a GSM based intercom system. The visitor pushes a button on the gate station and the G-Speak ULTRA dials your mobile phone. This allows you to answer your door from anywhere in the world [GSM coverage required]. The G-SPEAK ULTRA promotes the ultimate in convenience and peace of mind by combining wireless GSM technology with CENTURION's futuristic and stylish ULTRA interface. They can be used as an intercom or to open and close automated gates.

MK II

This is a cellular network-based multi-unit intercom system that, through mobile and globally based communication technology, offers the user management and administration features associated with GSM based intercom systems. It allows for convenient screening of visitors to residential or business premises before they are allowed access while still at the entrance, especially useful for gated communities or big apartment blocks.



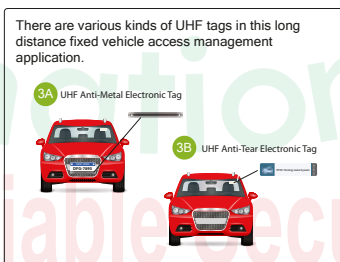
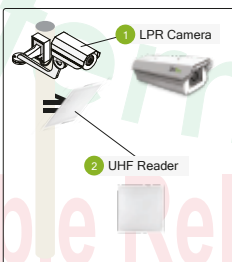
PARKING SYSTEMS

Plock 1& 2

This is a ZKTeco's second generation of parking locks. Plock 2 keeps all original features of Plock 1 and is equipped with new auto-sensing function. User can easily manage his/her parking space by placing a sensor in a cigarette lighter receptacle. Compared with traditional parking locks, Plock 2 does not need any manual operation, which makes parking experiences more ideal. It is a competent private parking manager.

UHF READERS

Combined with UHF non-contact radio frequency circuits and various coding and decoding algorithms, this card issuer can read the labels and cards which support EPC global UHF Class1 Gen 2 and ISO 18000-6C standard. Its USB interface adopts the advanced plug and play interface without driver core technology to connect computer and other equipment. Useful for tolled roads, controlled parking area to open boom barriers or automatic gates



ZKTECO LIFT ACCESS CONTROL

Designing specifically for elevator control. Floor access can be restricted based on various user credentials, including fingerprint, proximity card and/or password. Pre-defined time schedules can also be used to control floor access. During normal visits/business hours, unrestricted floor access can also be permitted (aka Passage mode).

The EC10 Elevator Control Panel can restrict access up to ten floors. The EX16 restricts access up to an additional sixteen floors. Each EC10 can support up to three EX16 boards. When combining together, a total fifty eight (58) floors can be controlled with a single EC10 bundle.

ELECTRIC FENCE

An electric fence is a barrier that uses electric shocks to deter animals and people from crossing a boundary. The voltage of the shock may have effects ranging from discomfort to death. They are used to enhance the security of sensitive areas like around homes and apartment.

ENERGIZER MACHINE

This a machine with alternating current [AC] fence chargers used to generate the electrical pulses. The pulses are wide and the voltage and are in form of Joules.



Hammer energizers

NEMTEK and STAFIX energizers



Galvanized HT Wire



HT Wire

HIGH TENSILE WIRE

They transmit the electrical pulses from the energizer machines to the wire strands.



STRAINER INSULATORS

Strainers maintain tension on fence wires, prevent strain on posts, add strength and keep an electric fence looking good.

Ws INSULATORS

W-insulators are easy to install and can be removed and reused with no damage to the post or the insulator. They oppose electrical current and make poor conductors between the metal bar and high tensile wire.



UNDERGATE CABLE

Use to carry power from the energizer to fence, connect one line to another



WARNING SIGN

Warning Signs made for electric fence to keep people safe and away. Highly visible warning sign. Alerts pedestrians to electric fence.



VOLTMETER

Used to check electric fence voltage



Razor wire



Green Razor wire



Topwall Electricfence with Razor wire



AUDIO PHONE

[Indoor and Outdoor unit]

This is a device that transmits and receives audio signals for communication between entrances /gate houses and the main house to enable the particular resident to know who is at the main entry to ease safe passage of visitors.

VIDEO PHONE VILLA

This is a device that simultaneously transmits and receives both audio and video signals for communication. They can be used in Villas or on multiple dwelling place.



Door Chime

The door chime is an essential component used in-home or office security system. The designing of these sensors can be done with two parts which are arranged in parallel to each other. So that the circuit can be formed. It is used to notify motion by making an alarming sound.

The wifi video phone uses the phone as your screen, if someone rings at your home gate bell, you can communicate with them as a video caller.



Video Phone with Wifi

MULTI APARTMENT AUDIO and VIDEO UNIT

[Indoor and Outdoor units]

This is situated at the gate or entrance door and relays both video and audio signals between the gate and the houses. So enable dwellers know in real time who is visiting them.



Video Unit

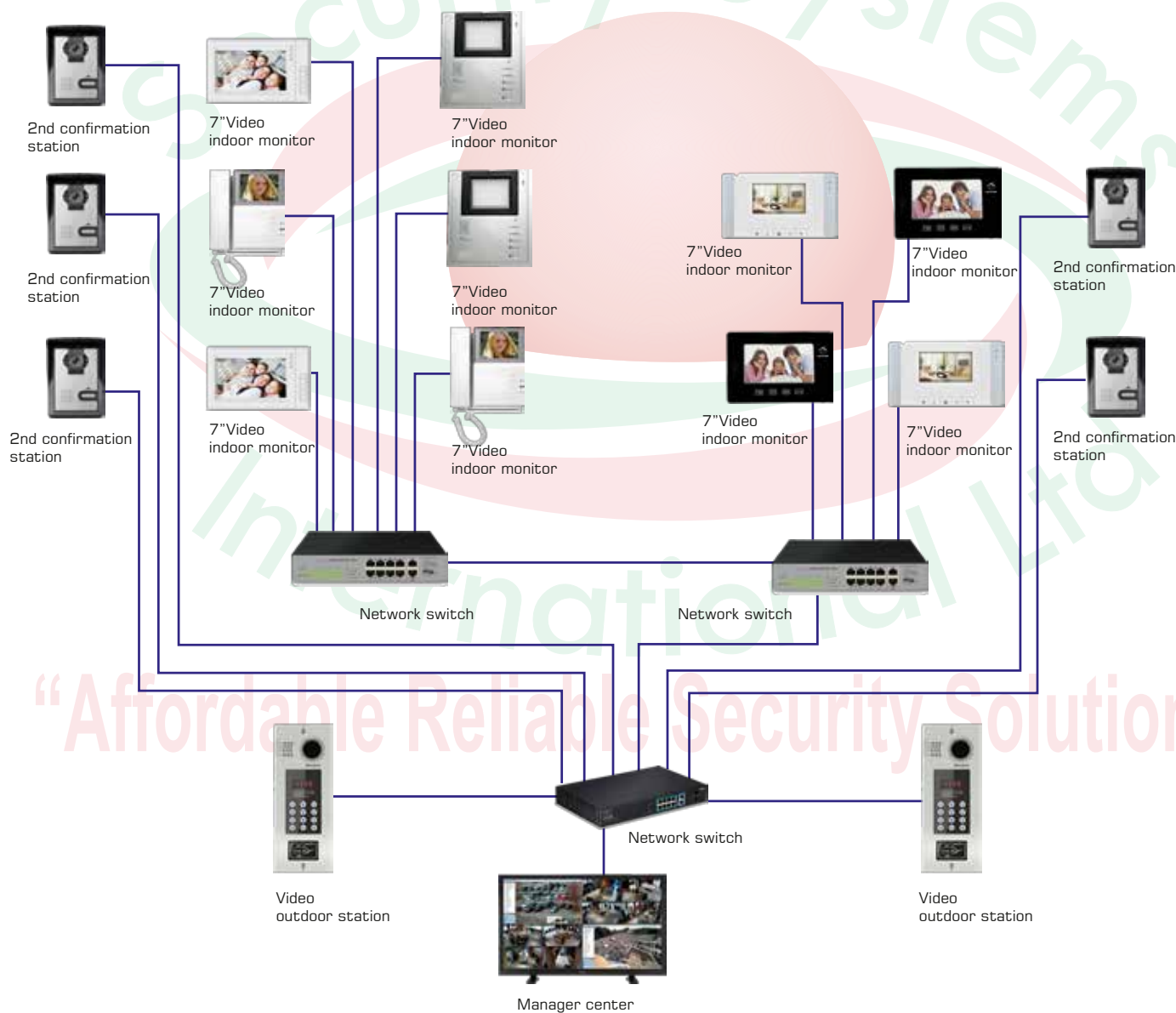


Audio Unit

VIDEO MULTI APARTMENT

The Video Multi Apartment system offers 3-level security at main guard station, tower lobby entrance and flat entrance. The indoor unit of VDPs provides the recording facility wherein the system is able to record communication between visitors and residents as well as take a picture if required.

The trendy intercom feature of VDPs allows residents to communicate with other residents in the same society, hence eliminating conventional telephones with EPABX system and reduces costs. This stylish device even enables users to leave messages when away from home and can also make emergency calls to the main guard station. Similar to villa VDPs, Multi Apartment VDPs have in-built Intrusion Alarm features which get active in any threat situation.



FOGGY SYSTEM

Releasing in 0.1 seconds and projecting security smoke over six meters in just two seconds – this fog system is a deterrent that gives intruders no time to think, forcing them to retreat. Avs security fogging deterrent has proven to be incredibly effective in preventing theft or damage once an intruder has broken into a business. It also protects staff from the danger of violent crime. Once fully- activated, intruders can see no more than 10cm ahead. This gives them no choice but to stop what they're doing and try to get out. And because of its density, the smokescreen hangs in the air long enough for help to arrive. As the security fog system leaves no residue, it can be used in any environment without the worry of damaging equipment or stock – from electrical goods and fashion, to white goods and antiques and is safe to humans also.



Foggy Dispenser



With ZKTeco advantages in own supply chain system and production quality, through the integration of advanced product resources, market resources and technical resources, ZKTeco are leading the renovation of the traditional cashier industry.



POS Terminal



Barcode Scanner



Printer

HOTEL LOCK SYSTEM.

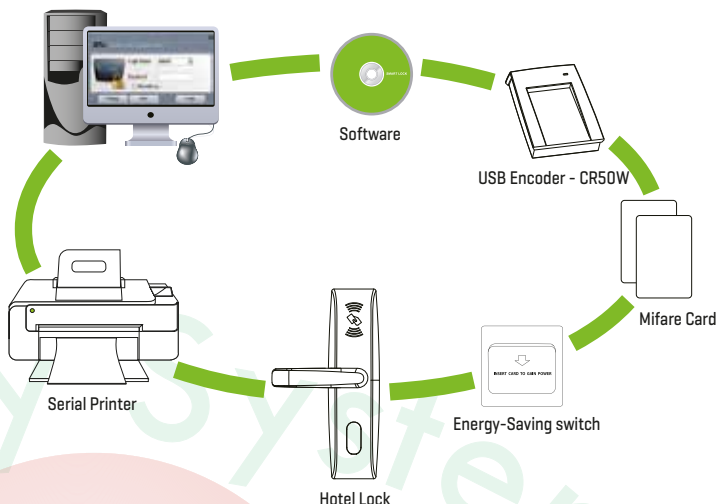
ZK Bio-lock Hotel Lock System is specially designed to meet the needs of small-medium hotels, maximum security, individual style and low operation costs. It is allowing for comprehensive access control and system management, but offers you an easy "one-click" installation.



Hotel Lock



Hotel Lock LH Series



WIRELESS HOTEL LOCK SOLUTION

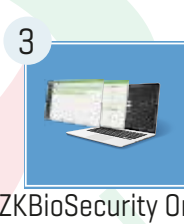
This lock requires no wiring and interlinkage, thus significantly lowering the difficulty of the installation of door lock surveillance network for hotel and office use. The wireless data communication and control between door locks and software can be completed by Zigbee wireless connection.



1
ZL400 Wireless
Hotel Lock



2
RG4100+ Wireless
Control Panel



3
ZKBioSecurity Online
Hospitality Software

SMART LOCK

A Smart lock is an electromechanical lock which allows you to open and lock your doors with a virtual key of fingerprint, face, code, RFID card, putting an end to problem of lost keys and enabling an array of intelligent and useful features. Smart Locks systems with its cutting edge provides biometric technology for security and convenience for homes and offices.



House / Office Lock with
Touch Screen Keypad



GL 300 locks for
glass doors



ZM 100 Lock with face
recognition

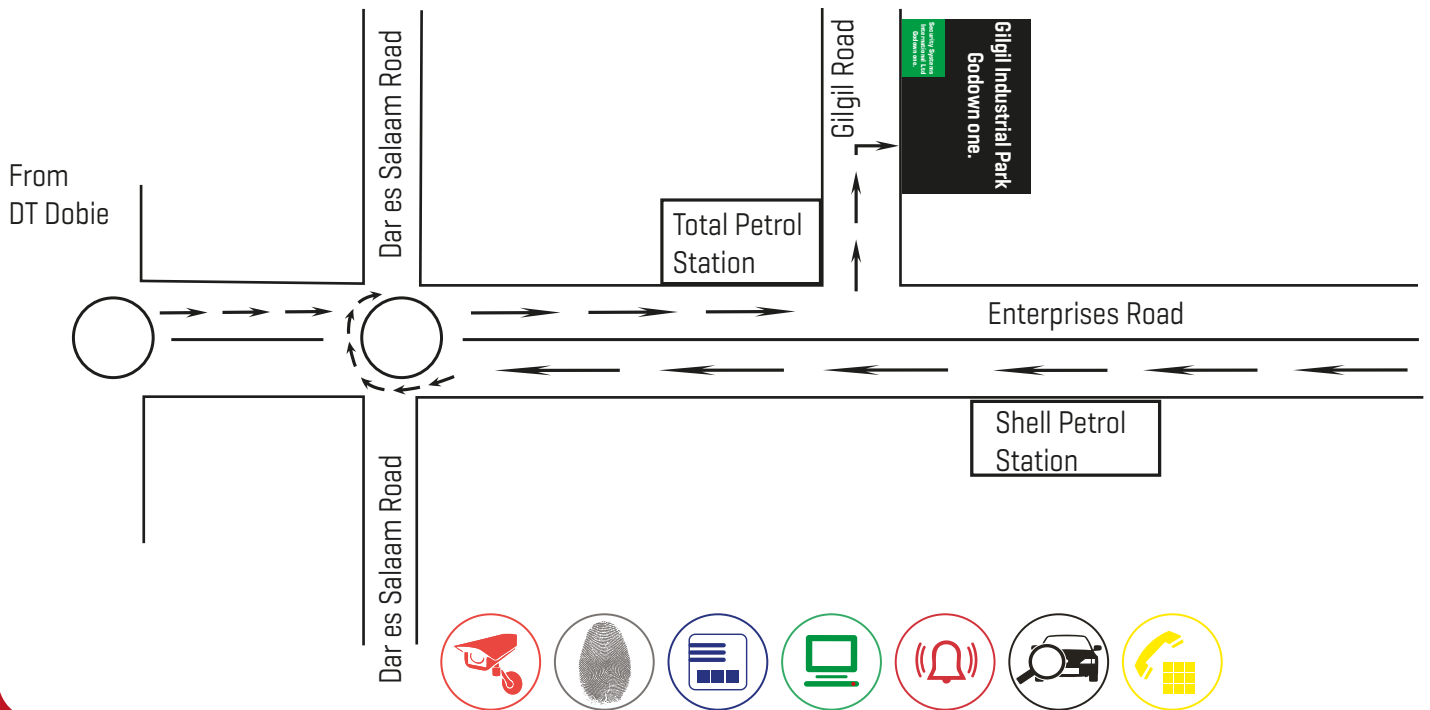


House/ Office Lock with
bluetooth



Padlock with Biometric

MAP LOCATION



"Affordable Reliable Security Solution"

VISIT OUR SHOWROOM

Off Enterprise Road, Gilgil Road, Gilgil Industrial Park Godown one

Tel: +254 20 6550 533 | 20 805 7550

Cell: +254 727 700 939 | 780 233 251 | 788 141 528

Email: info@securitysystemsintltd.com | www.securitysystemsintltd.com



@SSIntLtd



@ssintltd



@Ssintltd KE



@Security Systems International Limited

ZKTeco[®]
Advanced Biometric and RFID Solutions

TURNSTAR
RELIABLE • DURABLE • GUARANTEED

uniview
Better Security, Better World.



HAMMER[™]

HIKVISION[®]

ROSSIARE
SECURITY PRODUCTS

MATRIX
TELECOM | SECURITY

SECOLink[®]

RL



AUS electronics
ITALIAN SECURITY MANUFACTURER



LEELLEN